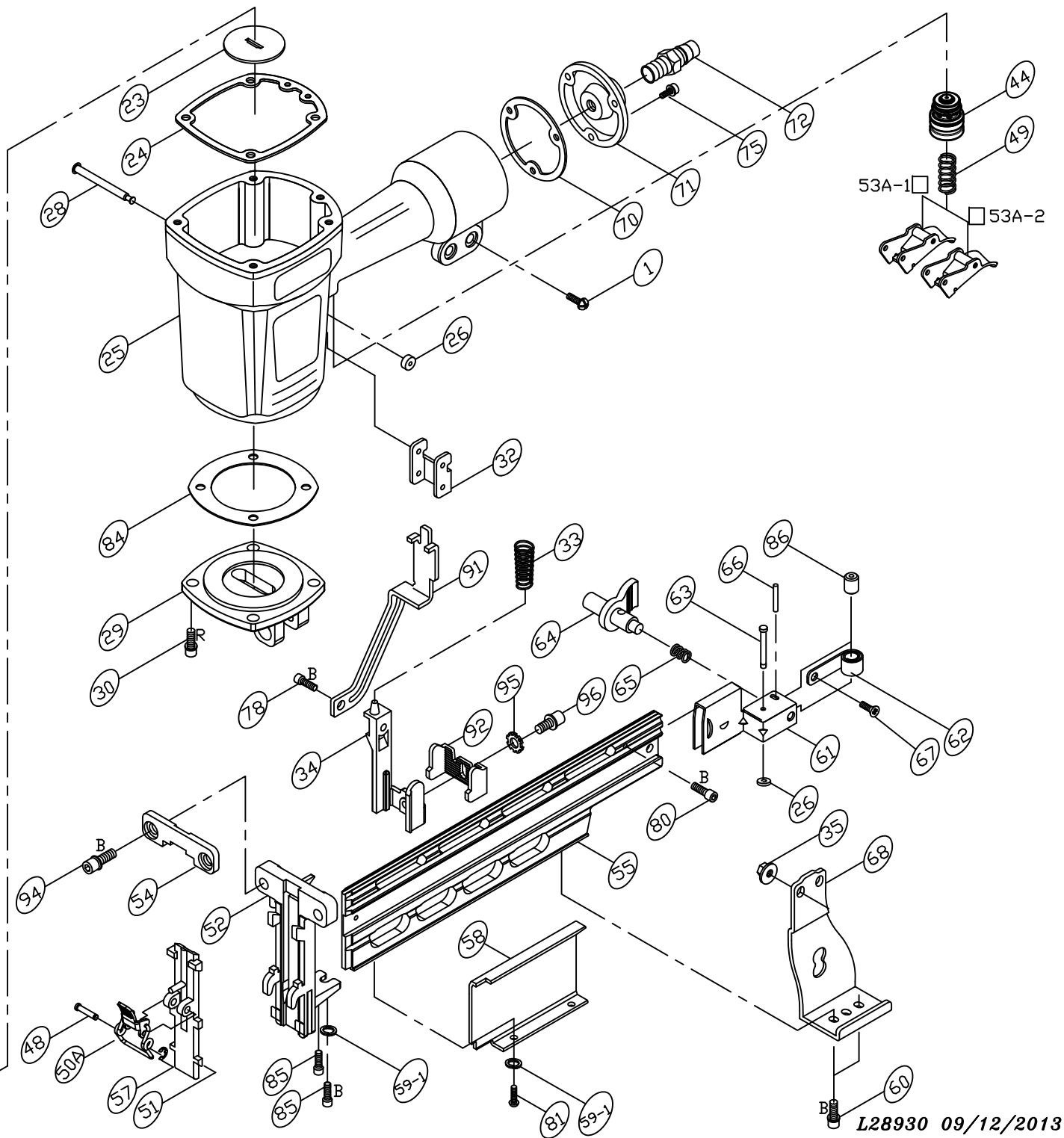
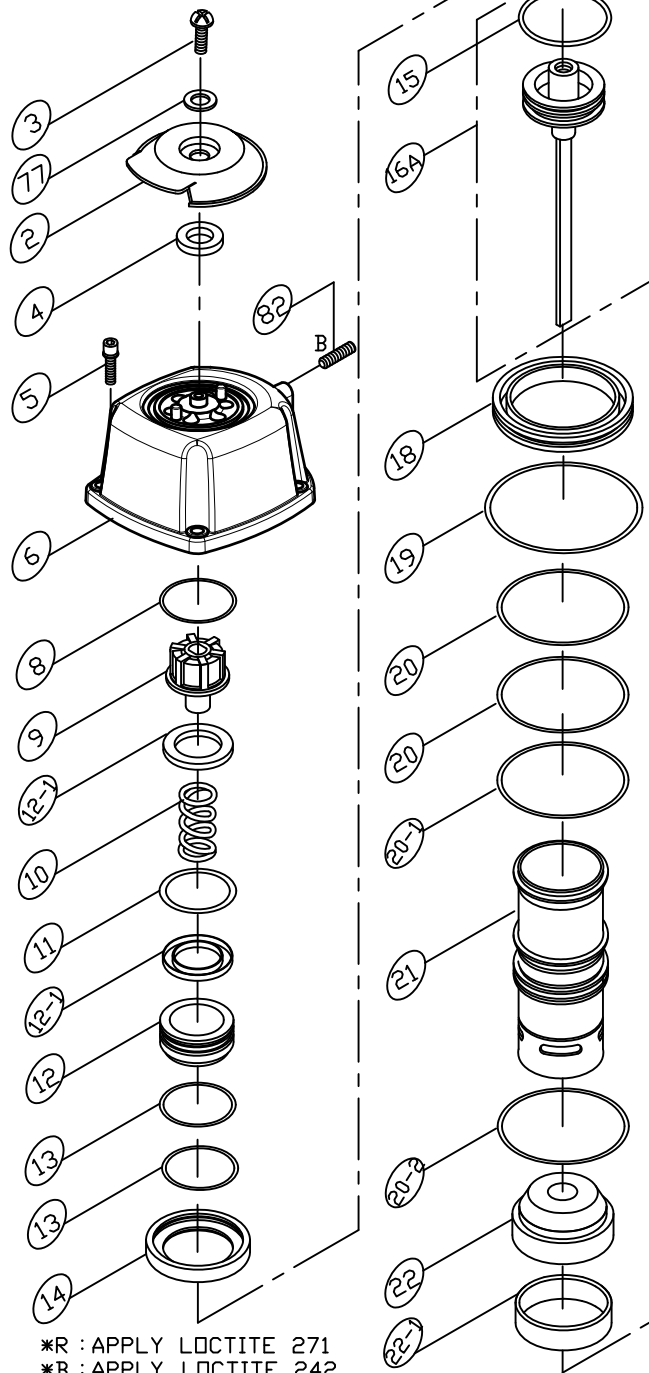


# MODEL : LU-851F2



\*R : APPLY LOCTITE 271  
 \*B : APPLY LOCTITE 242

**PARTS LIST (LU-851F2)**

**\*WHEN ORDERING SPARE PARTS, PLEASE STATE ITEM No, PART NO. AND DESCRIPTION.**

| ITEM | PART NO      | DESCRIPTION        | QTY | ITEM  | PART NO      | DESCRIPTION             | QTY | ITEM | PART NO     | DESCRIPTION            | QTY |
|------|--------------|--------------------|-----|-------|--------------|-------------------------|-----|------|-------------|------------------------|-----|
| 01   | US06100B-20  | UM.HD.BOLT         | 2   | 35    | LN0600NB     | LOCK NUT                | 2   | 86   | 15308601    | ROLLER                 | 1   |
| 02   | 15100202     | EXHAUST COVER      | 1   | 44    | 15104401A    | SWITCH ASSEMBLY         | 1   | 91   | 25209101    | UPPER SAFETY LEVER     | 1   |
| 03   | US05080L-20  | UM.HD.BOLT         | 1   | 48    | 15304801     | STEPPED PIN             | 1   | 92   | 25209201    | SAFETY ADJUSTING LEVER | 1   |
| 04   | 15300401     | PU RING            | 1   | 49    | 16305401     | SPRING                  | 1   | 94   | HS06100B-20 | HEX.SOC.HD.BOLT        | 2   |
| 05   | HS06100LW-25 | HEX.SOC.HD.BOLT+SW | 4   | 50A   | 25205001A    | LATCH                   | 1   | 95   | 25209401    | STAR WASHER            | 1   |
| 06   | 15100601     | CAP                | 1   | 51    | 25205101     | DRIVER GUIDE COVER      | 1   | 96   | HS05080L-08 | HEX.SOC.HD.BOLT        | 1   |
| 08   | 15100801     | SPACER             | 1   | 52    | 25905202     | NOSE                    | 1   |      |             |                        |     |
| 09   | 15100901     | PISTON STOPPER**   | 1   | 53A-1 | 25205301A    | SEQUENTIAL FIRE TRIGGER | 1   |      |             |                        |     |
| 10   | 15101001     | SPRING**           | 1   | 53A-2 | 25205302A    | BUMP FIRE TRIGGER       | 1   |      |             |                        |     |
| 11   | OR41630N     | O RING**           | 1   | 54    | 25205401     | SET PLATE               | 1   |      |             |                        |     |
| 12   | 15101202     | PISTON HEAD VALVE  | 1   | 55    | 25905501     | MAGAZINE                | 1   |      |             |                        |     |
| 12-1 | 15100401     | SPACER             | 2   | 57    | ER0300R      | E RING                  | 1   |      |             |                        |     |
| 13   | OR52126N     | O RING             | 2   | 58    | 25905801     | COVER                   | 1   |      |             |                        |     |
| 14   | 15101401     | SEAL               | 1   | 59-1  | SW0500W      | SPRING WASHER           | 4   |      |             |                        |     |
| 15   | OR40735N     | O RING**           | 1   | 60    | HS05080LW-12 | HEX.SOC.HD.BOLT+SW      | 2   |      |             |                        |     |
| 16A  | 26001603A    | DRIVER ASSEMBLY    | 1   | 61    | 25206101     | PUSHER                  | 1   |      |             |                        |     |
| 18   | 15301801     | CYLINDER SPACER    | 1   | 62    | 15306201     | SPRING**                | 1   |      |             |                        |     |
| 19   | OR74431N     | O RING             | 1   | 63    | 12105802     | SHAFT                   | 1   |      |             |                        |     |
| 20   | OR53726N     | O RING**           | 2   | 64    | 15306403     | STOPPER                 | 1   |      |             |                        |     |
| 20-1 | OR47735N     | O RING**           | 1   | 65    | 12103901     | SPRING                  | 1   |      |             |                        |     |
| 20-2 | OR49735N     | O RING**           | 1   | 66    | RP3016S      | ROLLED PIN              | 1   |      |             |                        |     |
| 21   | 15302101     | CYLINDER           | 1   | 67    | FH04070L-05  | FLAT.HD.BOLT            | 1   |      |             |                        |     |
| 22   | 15102202     | BUMPER**           | 1   | 68    | 15306802     | BRACKET                 | 1   |      |             |                        |     |
| 22-1 | 15102203     | COLLAR             | 1   | 70    | 15107001     | GASKET                  | 1   |      |             |                        |     |
| 23   | 15302301     | WASHER             | 1   | 71    | 15107101     | END CAP                 | 1   |      |             |                        |     |
| 24   | 15102401     | GASKET**           | 1   | 72    | 12106401     | AIR PLUG                | 1   |      |             |                        |     |
| 25   | 15102501     | BODY               | 1   | 75    | HS05080BW-16 | HEX.SOC.HD.BOLT+SW      | 3   |      |             |                        |     |
| 26   | 16103001     | PU RING**          | 4   | 77    | FW050130B-10 | FLAT WASHER             | 1   |      |             |                        |     |
| 28   | 16102902     | STEPPED PIN        | 3   | 78    | HS05080BW-08 | HEX.SOC.HD.BOLT+SW      | 1   |      |             |                        |     |
| 29   | 25202901     | BOTTOM             | 1   | 80    | HS04070B-06  | HEX.SOC.HD.BOLT         | 1   |      |             |                        |     |
| 30   | HS06100BW-20 | HEX.SOC.HD.BOLT+SW | 4   | 81    | US05080L-12  | UM.HD.BOLT**            | 2   |      |             |                        |     |
| 32   | 25203201     | GUIDE SAFETY LEVER | 1   | 82    | SS06100B-06  | SET SCREW               | 1   |      |             |                        |     |
| 33   | 25203301     | COMPRESSION SPRING | 1   | 84    | 15108402     | GASKET**                | 1   |      |             |                        |     |
| 34   | 25203401     | SAFETY LEVER       | 1   | 85    | HS05080L-12  | HEX.SOC.HD.BOLT         | 2   |      |             |                        |     |