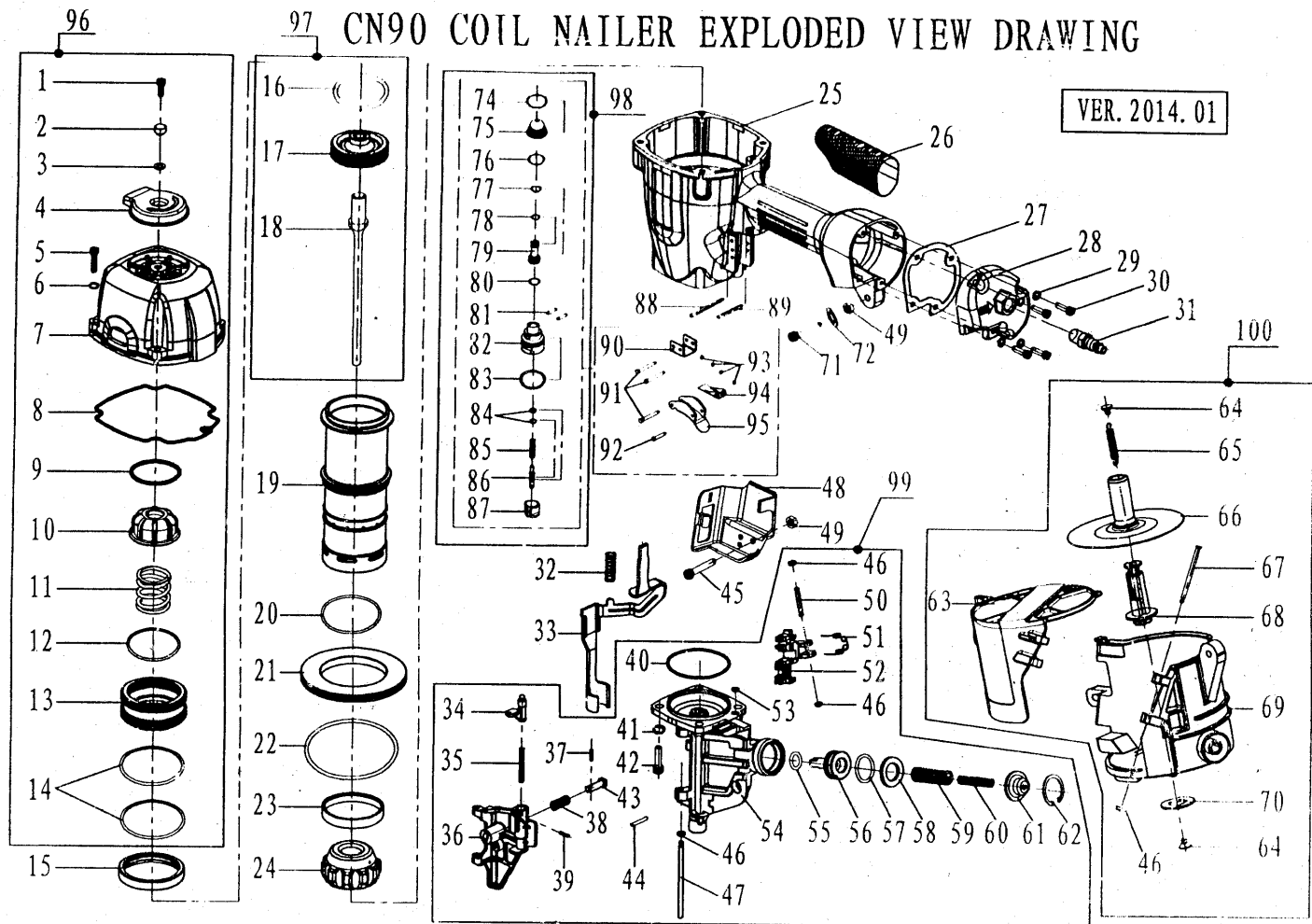


# CN90 COIL NAILER EXPLODED VIEW DRAWING

VER. 2014. 01



## PARTS LIST FOR COIL NAILER MODEL: CN90

No.	Description	Number	Qty	No.	Description	Number	Qty	No.	Description	Number	Qty
1	Screw M6X20	/	1	34	Door Latch	CN55-310-04	1	67	Step pin	CN70-320-03	1
2	Exhaust Cover Bushing	CN70-100-06	1	35	Compression Spring	CN55-310-15	1	68	Magazine Post	CN90-320-07	1
3	Seal (12.5-7-1.5)	F30YA-200-04	1	36	Door	CN90-310-02	1	69	Magazine	CN90-320-01	1
4	Exhaust Cover	CN70-100-08	1	37	Roll Pin 2.5X12	/	1	70	Post Retainer	CN55-320-06	1
5	Screw M6X35	/	4	38	Compression Spring	CN90-310-24	1	71	Screw M6X40	/	1
6	Washer 6	/	4	39	Roll Pin 3X12	/	1	72	Plain Washer	/	1
7	Cylinder Cap	CN90-100-01	1	40	O-Ring 61.5X1.8	/	1	74	O-Ring 15.2X1.9	/	1
8	Cylinder Cap Seal	CN90-100-09	1	41	Washer 8	/	4	75	Spacer	CN55-220-06	1
9	Spacer Exhaust	CN90-100-03	1	42	Screw M8X30	/	4	76	O-Ring 11.5X2	/	1
10	Piston Stop	CN90-100-05	1	43	Check Pawl	CN90-310-05	1	77	O-Ring 6.8X1.9	/	1
11	Compression Spring	CN90-100-04	1	44	Roll Pin 3X22	/	1	78	O-Ring 5.8X1.9	/	1
12	O-Ring 52X3	/	1	45	Screw M6X30	/	1	79	Pilot Valve	CN55-220-05	1
13	Head Valve Piston	CN90-100-02	1	46	Rubber Washer 7	/	3	80	O-Ring 8.5X2	/	1
14	O-Ring 62X3	/	2	47	Straight Pin	CN90-310-18	1	81	Straight Pin	CN55-220-02	2
15	Cylinder Seal	CN90-200-04	1	48	Contact Arm Cover	CN90-340-03	1	82	Trigger Valve Housing	CN55-220-03	1
16	O-Ring 50X4	/	1	49	Elastic Stop Nut M6	/	2	83	O-Ring 19.8X2.4	/	1
17	Piston	CN90-210-01	1	50	Step Pin	CN90-310-14	1	84	O-Ring 2.5X1.4	/	2
18	Driver	CN90-210-02	1	51	Torsion Spring	CN90-310-07	1	85	Compression Spring	CN55-220-07	1
19	Cylinder	CN90-200-03	1	52	Feed Pawl	CN90-310-03	1	86	Trigger Valve Stem	CN55-220-01	1
20	O-Ring 56.5X3.1	/	1	53	O-Ring 4.2X1.6	/	1	87	Trigger Valve Cap	CN55-220-04	1
21	Cylinder Ring	CN90-200-05	1	54	Nose	CN90-310-01	1	88	Roll Pin 3X32	/	1
22	O-Ring 95X3.6	/	1	55	O-Ring 9.8X2.4	/	1	89	Roll Pin 3X22	/	1
23	Check Valve	CN90-200-06	1	56	Feed Piston	CN90-310-06	1	90	Contact Arm	CN55-200-10	1
24	Bumper	CN90-310-19	1	57	O-Ring 24X2.5	/	1	91	Step Pin 3X26	/	3
25	Body	CN90-200-01	1	58	Feed Piston Stop	CN90-310-10	1	92	Step Pin 3X16.7	/	1
26	Grip	F50C-200-03	1	59	Compression Spring A	CN90-310-11A	1	93	O-Ring 1.2X1.9	/	4
27	End Cap Gasket	CN90-200-07	1	60	Compression Spring B	CN90-310-11B	1	94	Contact Lever	CN55-220-09	1
28	End Cap	CN90-200-08	1	61	Spring Collar	CN90-310-08	1	95	Trigger	F32/9032-230-01	1
29	Washer 5	/	4	62	Retaining Ring C32	/	1	96	Cylinder Cap Unit	CN90-100-00	1
30	Hex Bolt M5X25	/	4	63	Magazine Cover	CN90-320-02	1	97	Piston Unit	CN90-210-00	1
31	Air Plug	/	1	64	Receiver Spring	CN45-320-06	2	98	Trigger Valve Assembly	CN55-220-00	1
32	Compressing Spring	CN90-340-02	1	65	Tension Spring	CN55-320-09	1	99	Nose Assembly	CN90-310-00	1
33	Contact Arm	CN90-340-01	1	66	Nail Support Unit	CN80-320-05	1	100	Magazine Assembly	CN90-320-00	1